



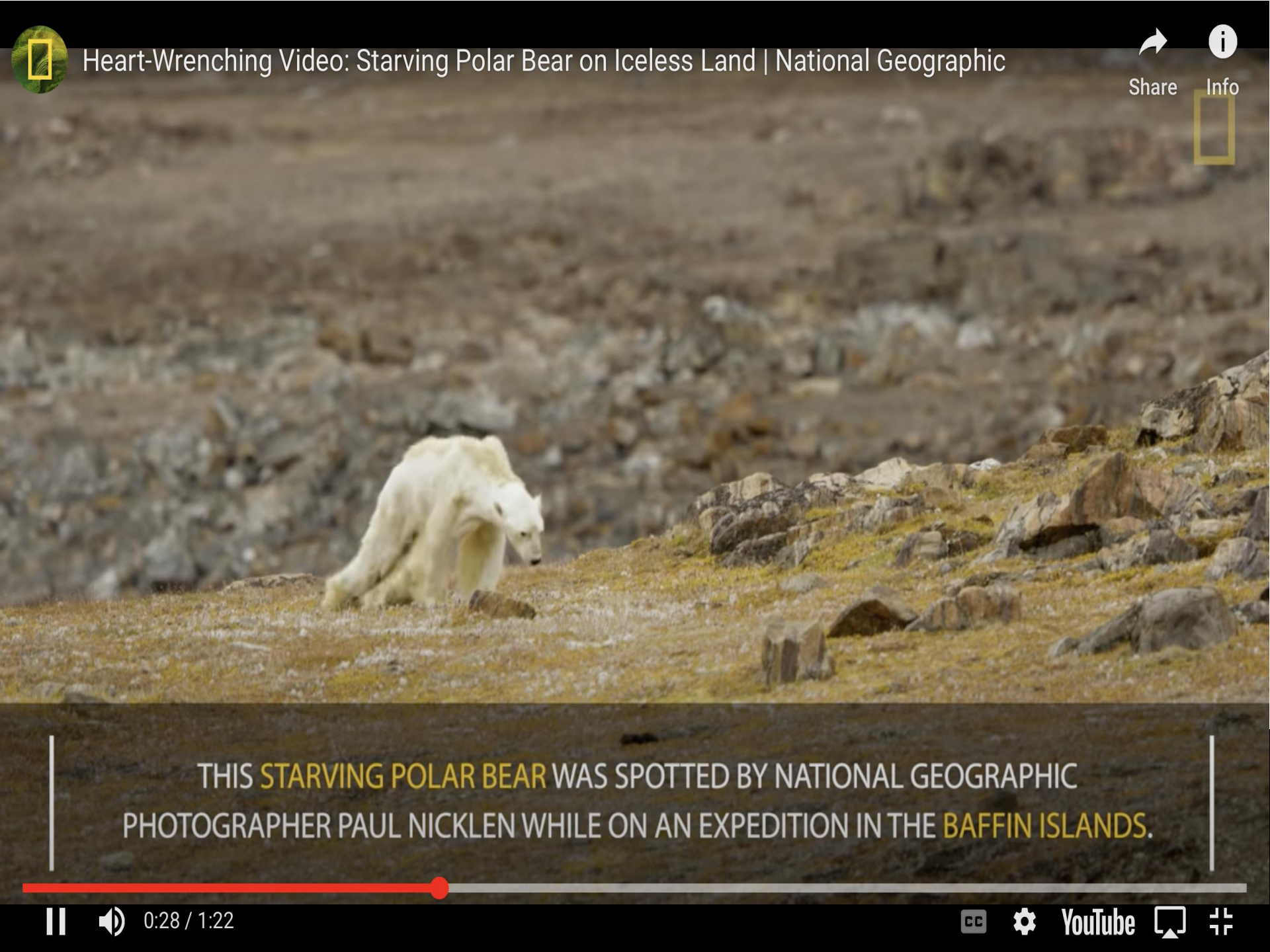
WESTERN AGRICULTURAL PROCESSORS
ASSOCIATION

Will the Last Person to Leave California Please Turn Off the Lights?

Roger A. Isom
President/CEO

Hysteria

- Definition –
 - Exaggerated or uncontrollable emotion or excitement
 - A term for a disorder characterized by neurological symptoms often accompanied by exaggerated or inappropriate emotional behavior



Heart-Wrenching Video: Starving Polar Bear on Iceless Land | National Geographic



Share

Info



THIS **STARVING POLAR BEAR** WAS SPOTTED BY NATIONAL GEOGRAPHIC PHOTOGRAPHER PAUL NICKLEN WHILE ON AN EXPEDITION IN THE **BAFFIN ISLANDS**.



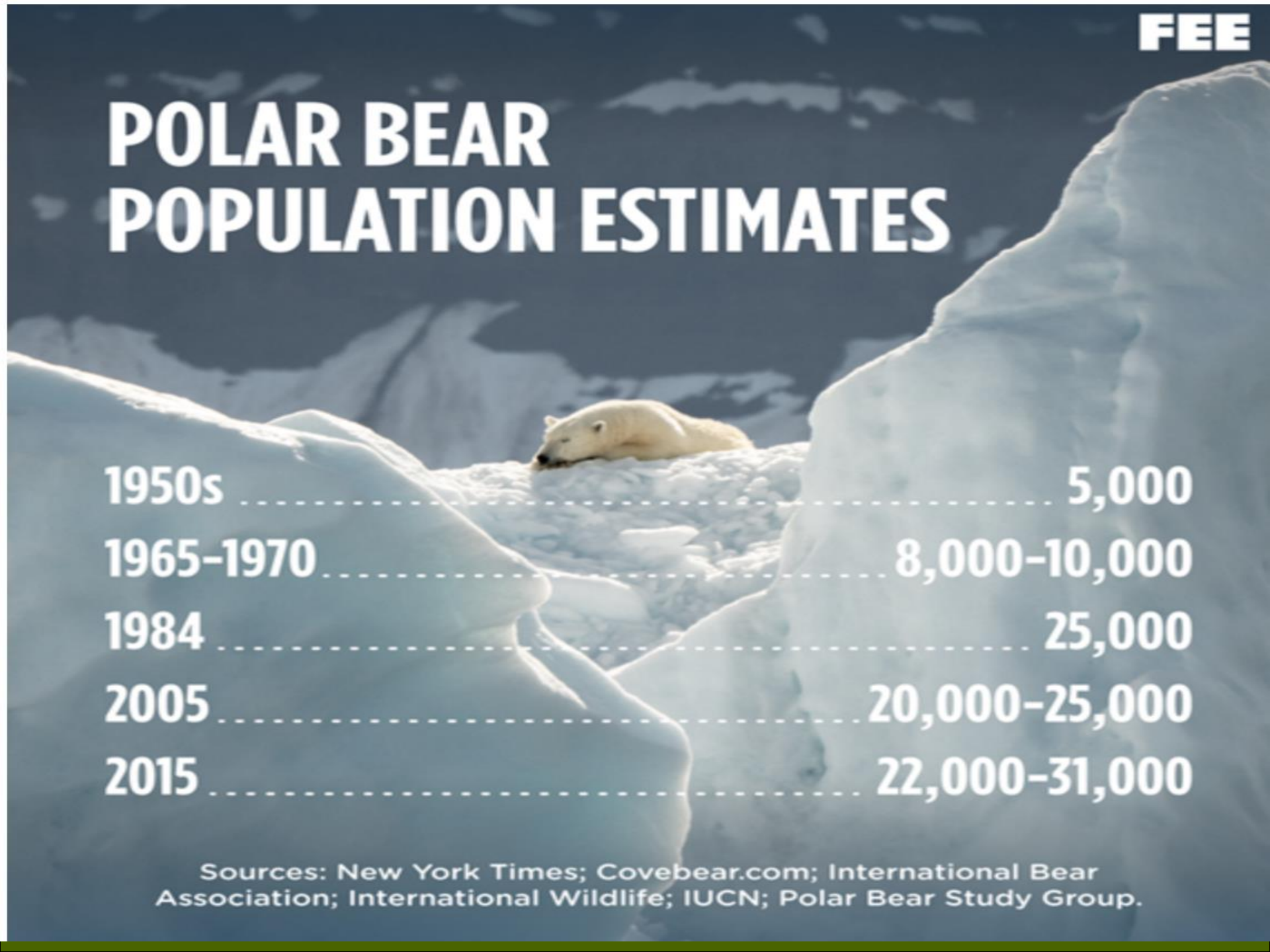
0:28 / 1:22



YouTube



POLAR BEAR POPULATION ESTIMATES



1950s	5,000
1965-1970	8,000-10,000
1984	25,000
2005	20,000-25,000
2015	22,000-31,000

Sources: New York Times; Covebear.com; International Bear Association; International Wildlife; IUCN; Polar Bear Study Group.

What has happened to California?

- Administration and Legislature led by hysteria are making irrational decisions



WESTERN AGRICULTURAL PROCESSORS
ASSOCIATION

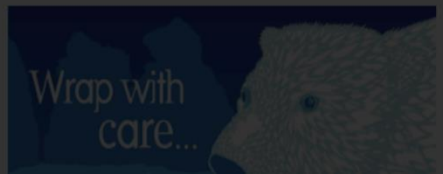
Beliefs

- Manmade Global Warming & Climate Change are impacting every weather event and wildfire
- California has unsafe and unfair work environment



WESTERN AGRICULTURAL PROCESSORS
ASSOCIATION

ARTWORK BY ROGER PEET. © 2012.



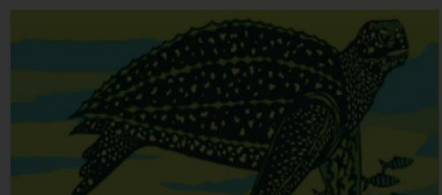
ARTWORK BY ROGER PEET. © 2012.



The Florid
enormou
But while
has nearl
years and
more cro
moved in
conflict w
they need

Be a
savvy
lover...
protect the
snowy plover

OVER
bitat of
arget for
activity.
vers
hem
plague



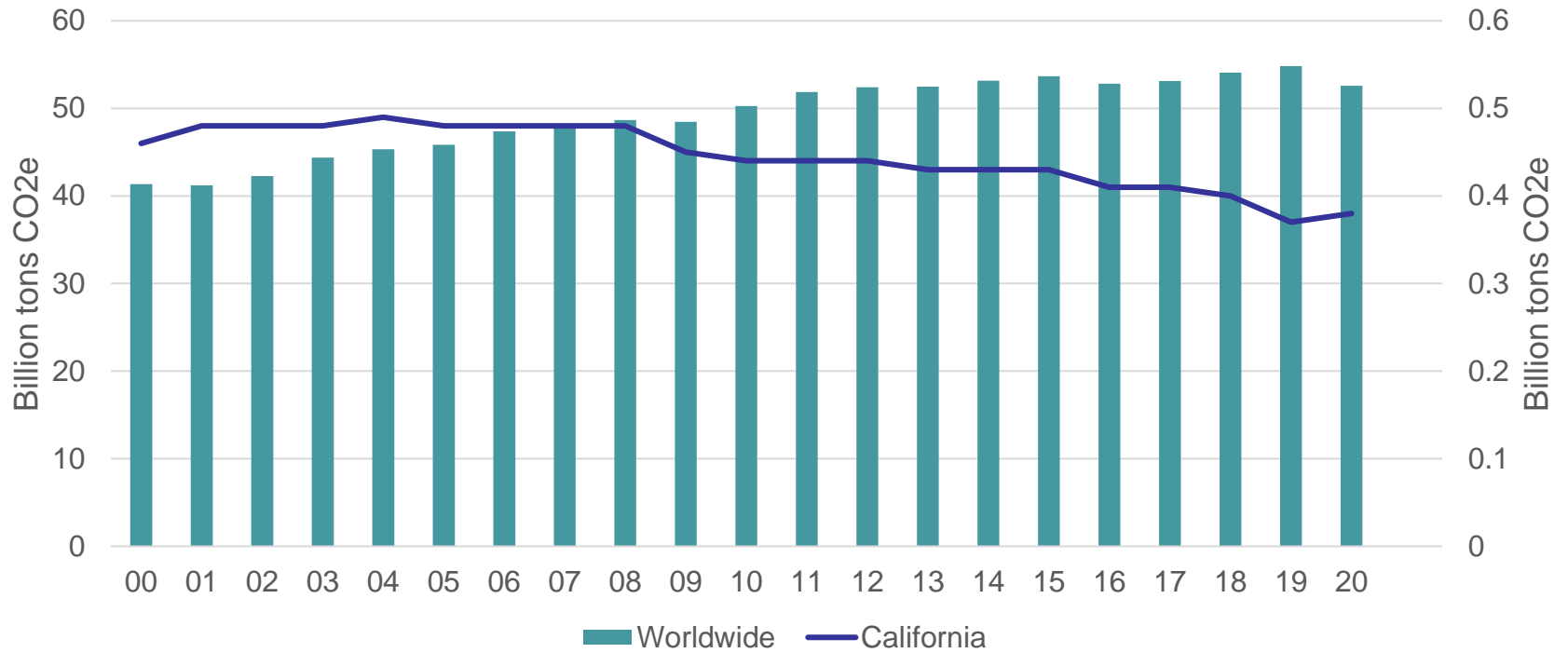
Wrap with
care...
save the

Safe
intercourse
saves



GHG Emissions

CA vs. World



WESTERN AGRICULTURAL PROCESSORS
ASSOCIATION

Where are we headed?

- All electric all the time
- No pesticides
- Full automation for those that remain



WESTERN AGRICULTURAL PROCESSORS
ASSOCIATION

Current Situation

- Coming regulatory mandates
 - CARB Advanced Clean Fleets Rule
 - Electric trucks
 - CARB LSI Regulation
 - Electric forklifts



WESTERN AGRICULTURAL PROCESSORS
ASSOCIATION

All Electric

- Trucks, forklifts and tractors
- Cost:
 - Already have the highest electricity rates in continental US
 - Electric Trucks cost more than diesel
 - Plus must have charging station
 - 9,000 lb weight capacity loss



WESTERN AGRICULTURAL PROCESSORS
ASSOCIATION

Infrastructure Challenges

- Already maxed out in many areas
- DC fast chargers are 1 MW each
- Site infrastructure issues



WESTERN AGRICULTURAL PROCESSORS
ASSOCIATION

PG&E General Rate Case

- 2023 – 2026 PGE GRC asking for 45% increase in rates = >\$5 billion!
- Undergrounding of power lines
 - >10,000 miles @ \$3 million/mile



WESTERN AGRICULTURAL PROCESSORS
ASSOCIATION

SCE General Rate Case

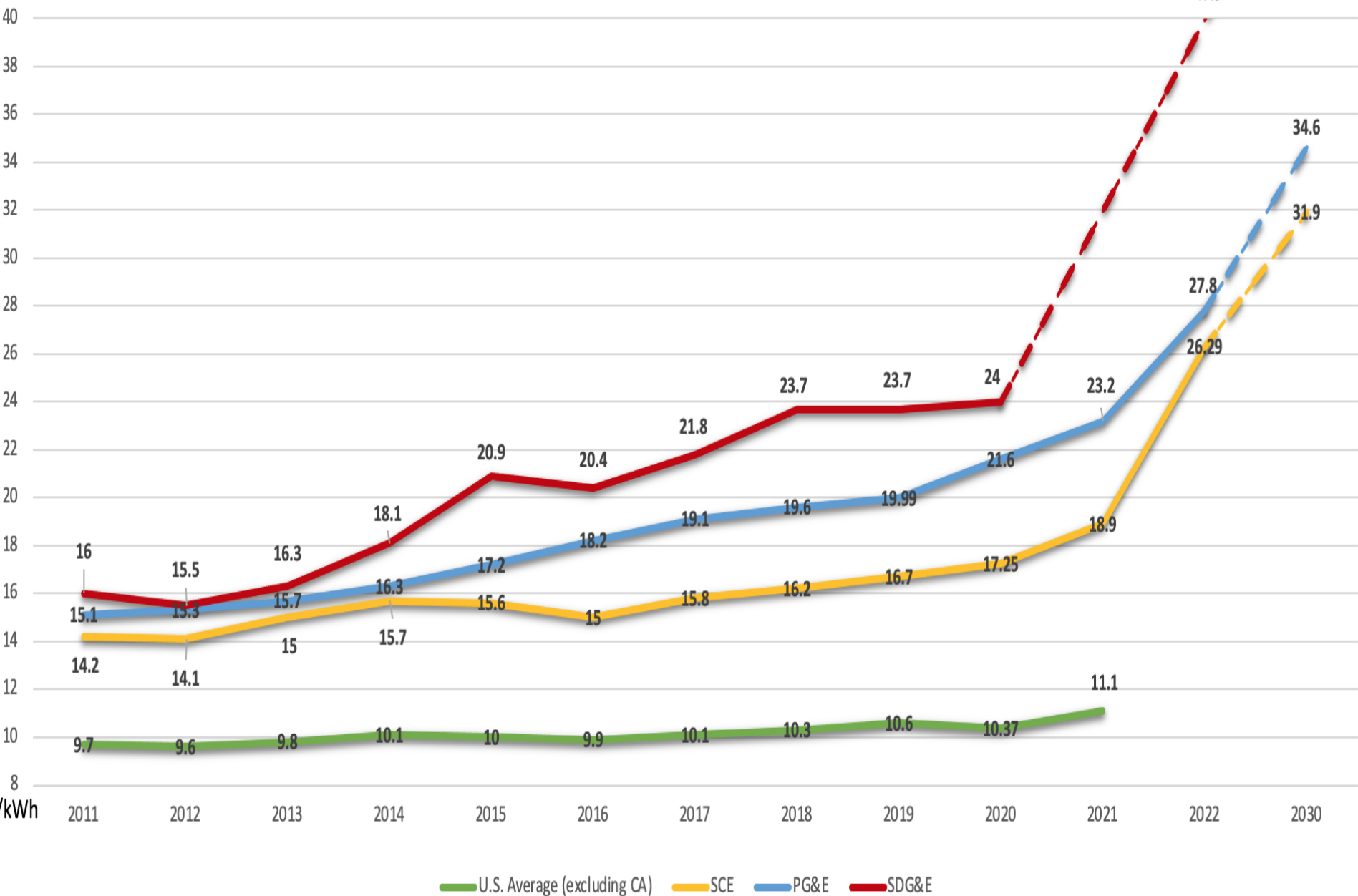
- New GRC filed
- Requesting 45% increase by end of 2026



WESTERN AGRICULTURAL PROCESSORS
ASSOCIATION

(system average rates)

Between 2011 - 2022 Electricity Prices in California rose 6x more than in rest of U.S.



Latest Scoping Plan

- 86% reduction in total fossil fuel demand by 2045
- 90% reduction in natural gas demand by 2045
- 3 million “all electric buildings” by 2030 and 7 million by 2045
- Only electric appliances can be installed beginning in 2026 for residential and 2029 for commercial
- Replace natural gas appliances with electric at the end of life
- All medium and heavy-duty trucks sales must be zero emissions by 2040
- All food processing operations must have 7.5% of energy demand must be electric by 2030 and 75% by 2045



WESTERN AGRICULTURAL PROCESSORS
ASSOCIATION



Cal/OSHA

- Nighttime lighting
- Covid-19...
- Indoor Heat Illness
- Workplace Violence



WESTERN AGRICULTURAL PROCESSORS
ASSOCIATION

Labor Costs

- Minimum Wage
 - \$16 per hour
 - \$18 per hour ballot initiative
 - \$20+ coming??...
- Ag overtime
 - Did it do what it said it would do?
 - 45 states still don't have ag overtime...

Pesticides

- Administration said 70% organic by 2050
- Sustainable Pest Management (SPM)
 - Eliminate Top 50 priority pesticides by 2050 (includes all fumigants)
- Notification
 - Advance notification to anyone who wants to know...



WESTERN AGRICULTURAL PROCESSORS
ASSOCIATION

Notification

- Recent comments at CDPR hearing:
 - Pesticides cause
 - Asthma
 - Valley fever
 - Clothes to fade after 4 days
 - Fallowed fields in western Fresno County aren't being farmed because they are contaminated with pesticides!



WESTERN AGRICULTURAL PROCESSORS
ASSOCIATION

Notification

- Applies to restricted use pesticides
- 24 hr notice
- Anyone can apply to be notified
- Monterey
 - > 60% of people notified don't live in CA
 - Multiple applications appealed and delayed



WESTERN AGRICULTURAL PROCESSORS
ASSOCIATION

So what do we do?

- LEAVE?...or
- Stay and fight!



WESTERN AGRICULTURAL PROCESSORS
ASSOCIATION

Action Items

- Educate at every opportunity
 - Legislators!
 - Regulators
- Comment at every opportunity
- Agriculture must be heard
- Stop the hysteria!



WESTERN AGRICULTURAL PROCESSORS
ASSOCIATION



WESTERN AGRICULTURAL PROCESSOR
ASSOCIATION



WESTERN AGRICULTURAL PROCESSORS
ASSOCIATION



WESTERN AGRICULTURAL PROCESSORS
ASSOCIATION